

**SCHULT**



MIDDLEBURY

THE

*Heritage*

COLLECTION

2016





# Standard Features

## INTERIOR

- Full Panel Drapes with Decorative Rod  
– Living Areas only
- 2" Mini-Blinds T/O
- Shaw 13 oz Carpet with 5#  
Rebond Pad & Tack Strip
- 8' Flat Ceilings Throughout
- Stipple Ceiling Finish
- Taped Ceiling Joints
- 1/2" Drywall Throughout
- Glidden Builder Grade Paint T/O
- "Closet Maid" Ventilated Wire  
Shelving in Closets
- Ceiling Lights All Living Areas
- 2" Flat Base Trim & Door  
Casing Throughout
- Smooth 5-panel White Interior Doors
- 32" Interior Doors where Applicable

## KITCHEN

- 42" Kitchen Cabinets with  
Overhead Cupboards
- MDF Cabinet Stiles
- Hardwood Cabinet Doors
- Decorative Range Hood
- Concealed European Style  
Counter-sunk Hinges
- 3/4" Adjustable Shelves in  
Overhead Cabinets
- Fixed Center Shelf in Base
- GFCI Receptacles
- Metal Drawer Guides
- Brushed Nickel Cabinet Door Knobs
- Stainless Steel Double Bowl Kitchen Sink
- Frigidaire Appliances  
– 30" Free-standing Electric Range  
– 18" CF Frost Free Refrigerator
- (4) Recessed Can Lights in Kitchen
- Bank of Drawers
- Single Bulb Light over Kitchen Sink
- 6" Ceramic Backsplash in Kitchen

## BATHS

- 60" Fiberglass Garden Tub/  
Shower in Master Bath
- 60" Fiberglass Tub/Shower - Bath #2
- High Pressure Laminated  
Countertops & 4" Backsplash
- Porcelain Commodes
- Porcelain Lavs
- Lighted Power Exhaust Fans in all Baths
- GFCI Receptacles
- Strip Light Above Vanities
- Large Vanity Mirror - Bath #1
- 36" Tall Furniture Style  
Vanity in Master Bath
- CFG Metal Faucets with Anti-Scald

## INSULATION

- Zone III Insulation Package  
– R-28 Blown Ceiling Insulation  
with Vapor Barrier  
– R-19 Fiberglass Insulation in Walls  
– R-11 Fiberglass Insulation in Floors  
– Metal Heat Ducts

## EXTERIOR

- Nominal 3/12 Roof Pitch
- 25 Year Certaineed XT  
Fiberglass Shingle
- Metal Facia
- Vinyl Vented Soffit
- 36" Steel JELD-WEN Front Door  
w/ Deadbolt
- 32" Steel JELD-WEN Rear Door  
w/ Deadbolt
- Exterior Light at Front and Rear Doors
- Double 4 1/2" Dutch Lap Vinyl Siding
- Exterior GFI Recept
- Low E Vinyl Windows w/Grids
- 15" Shutters (FDS only on  
Sectionals & Modulars)

## UTILITIES

- 200 AMP Service Panel 20/40 Box
- Electric Furnace
- 30 Gallon Electric Water Heater
- Water Heater Pan with Exterior Drain
- PEX Plumbing
- Wire & Plumb for Washer
- Wire & Vent for Dryer
- Recessed Whole House Shut Off
- Water Shut-Off Valves Throughout
- GFI Protected Receptacles  
in Kitchen and Baths

## CONSTRUCTION

- Steel I-Beam Frame with Detachable Hitch
- 2"x6" Floor Joists - 16" O.C. on 28 Wides
- 2"x8" Floor Joists - 16" O.C. on 30 Wides
- 19/32 T&G OSB Floor  
Decking Glued & Fastened
- 2" x 6" Exterior Walls - 16" O.C.
- 30 lb. Roof Load
- 7/16" OSB Roof Sheathing
- Ridge Vent Roof Venting
- Linked Smoke Detectors with Battery  
Back-up in Main Living & All Bedrooms
- 7/16" OSB Exterior Sheathing  
with Windwrap

## MODULAR SPECIFICATIONS ADDITIONS

- Nominal 3/12 Roof Truss
- 2" x 10" Floor Joists 16" O.C.
- R-40 Insulation in Ceiling
- Additional Exterior Recept (2 Total)
- 30# Ground Snow Load
- Fiberglass Heat Ducts
- 2" x 4" Interior Walls
- 2" x 4" Mate Line Wall
- 40/40 200 amp Panel Box
- Kinro Argon Gas Windows



# Table of Contents

<b>Model Name</b>	<b>★</b>	<b>Model No.</b>	<b>★</b>	<b>Sq. Footage</b>	<b>★</b>	<b>Bedrooms</b>	<b>★</b>	<b>Baths</b>	<b>★</b>	<b>Page</b>
Washington	★	4428-9003	★	1,188	★	3	★	2	★	6
Reagan	★	4428-9008	★	1,188	★	3	★	2	★	7
Kennedy	★	4828-9000	★	1,296	★	3	★	2	★	8
Van Buren	★	4828-9030	★	1,224	★	3	★	2	★	9
Madison	★	4828-9045	★	1,296	★	3	★	2	★	10
Garfield	★	5228-9016	★	1,404	★	3	★	2	★	11
Eisenhower	★	5228-9001	★	1,404	★	3	★	2	★	12
Jefferson	★	5228-9007	★	1,404	★	3	★	2	★	13
Truman	★	5628-9009	★	1,512	★	3	★	2	★	14
Buchanan	★	5628-9037	★	1,512	★	3	★	2	★	15
Coolidge	★	5628-9033	★	1,422	★	3	★	2	★	16
Jackson	★	5628-9034	★	1,512	★	3	★	2	★	17
Wyatt	★	5628-8045	★	1,512	★	3	★	2	★	18
Roosevelt	★	6028-9002	★	1,620	★	3	★	2	★	19
McKinley	★	6028-9019	★	1,620	★	4	★	2	★	20
Lincoln	★	6428-9006	★	1,728	★	3	★	2	★	21
Ward	★	6828-9006-1	★	1,836	★	4	★	2	★	22
Harding	★	7628-9020	★	2,052	★	4	★	2	★	23
Cleveland	★	6030-9024	★	1,800	★	3	★	2	★	24
Grant	★	6030-9025	★	1,800	★	3	★	2	★	25
Harrison	★	6430-9046	★	1,920	★	3	★	2	★	26
Laramie	★	6830-8052	★	2,040	★	3	★	2	★	27
Chadwick	★	7630-8028	★	2,280	★	4	★	3	★	28



# Exterior Packages



## Keystone PACKAGE

- ~ 3/12 Roof Pitch
- ~ 3 Color Packages Available



## Prairie PACKAGE

- ~ 5/12 Roof Pitch
- ~ 2 Color Packages Available



## Craftsman PACKAGE

- ~ 5/12 Roof Pitch



The Heritage Collection offers three distinctive color packages that fit your unique style.

# Color Packages

## Heritage Exterior Package

### TUNDRA MOSS

- ~ Dutch lap siding – tundra moss
- ~ Board & batten on faux bump – irish linen
- ~ Trim color – white
- ~ Shake siding in gable – forrest
- ~ Vinyl window surrounds – FDS
- ~ White outside corner posts – FDS



## Heritage Exterior Package

### CASTLESTONE

- ~ Dutch lap siding – castlestone
- ~ Board & batten on faux bump – clipper gray
- ~ Trim color – white
- ~ Shake siding in gable – smokestone
- ~ Vinyl window surrounds – FDS
- ~ White outside corner posts – FDS



## Heritage Exterior Package

### RUSTIC CLAY

- ~ Dutch lap siding – Rustic Clay
- ~ Board & batten on faux bump – irish linen
- ~ Trim color – white
- ~ Shake siding in gable – shoreline
- ~ Vinyl window surrounds – FDS
- ~ White outside corner posts – FDS



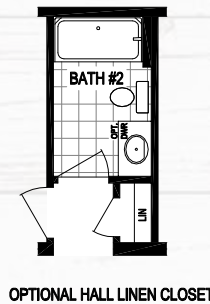
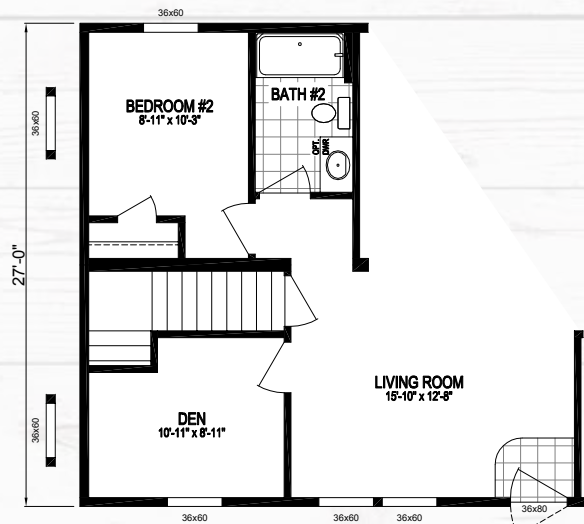
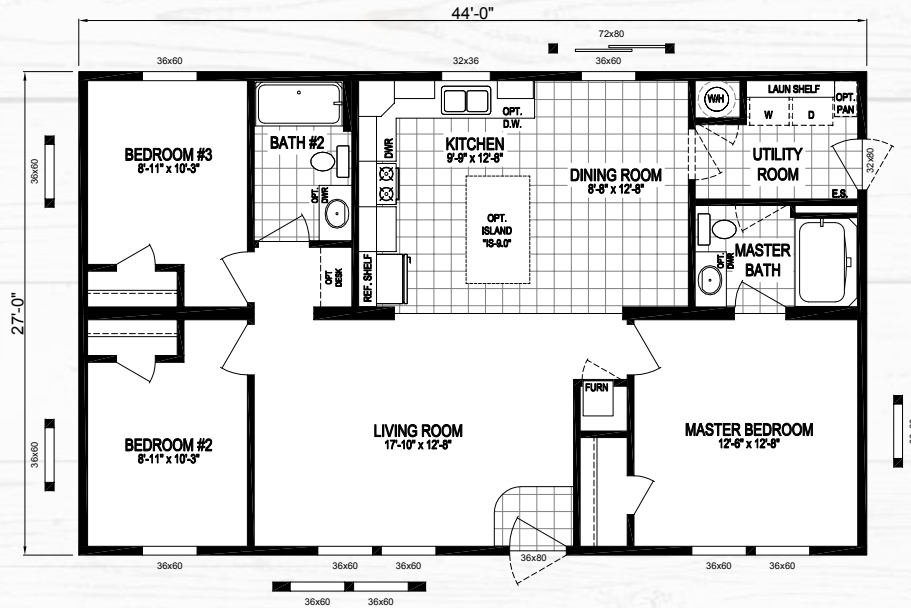




# The Reagan

1,188 sq. ft. 3 Bedroom / 2 Bath ★ 4428-9008

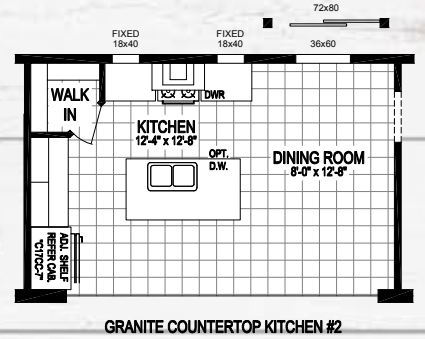
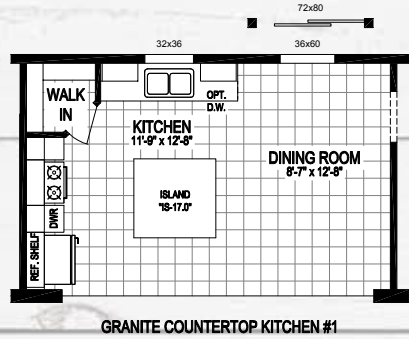
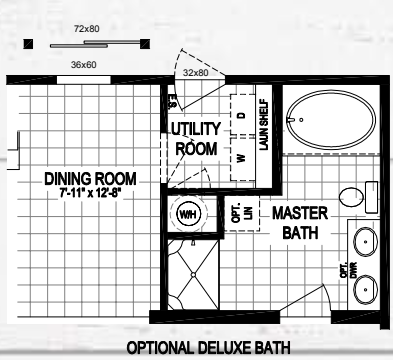
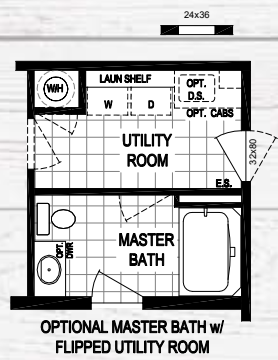
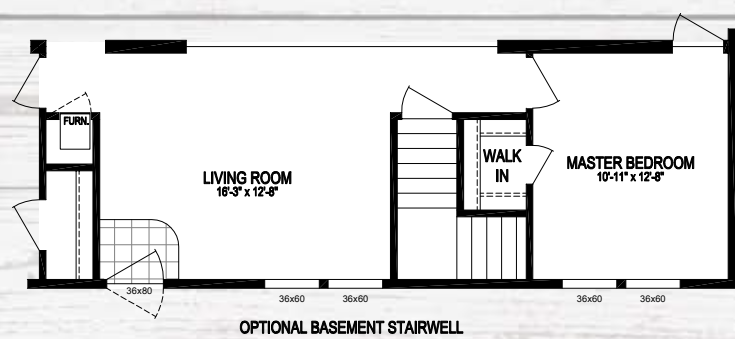
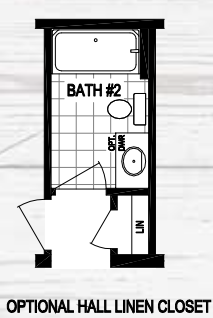
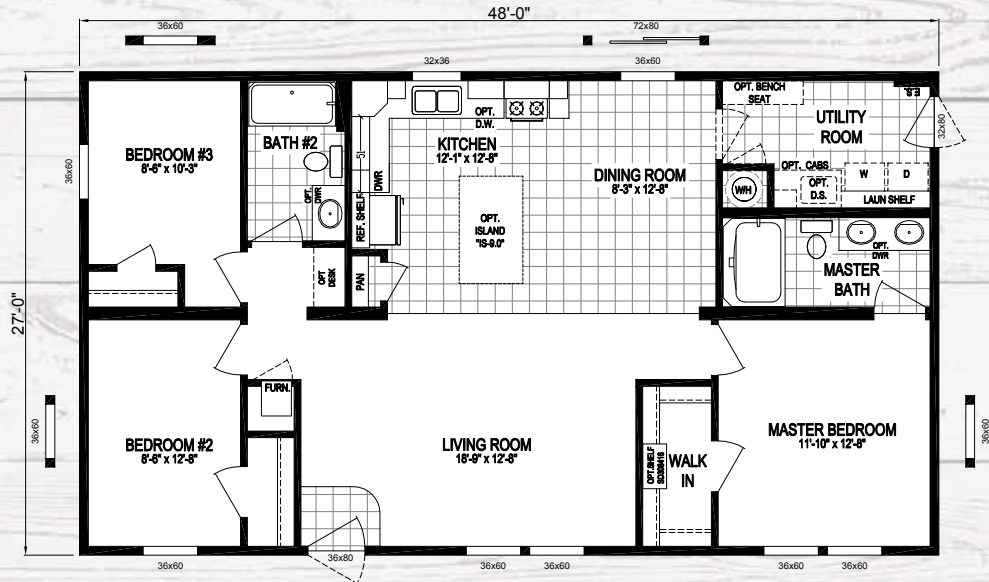
MODEL NUMBER





# The Kennedy

MODEL NUMBER **4828-9000** ★ 1,296 sq. ft. 3 Bedroom / 2 Bath





# The Van Buren

1,224 sq. ft. 3 Bedroom / 2 Bath ★ 4828-9030

MODEL NUMBER



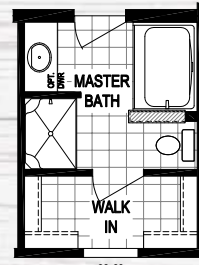
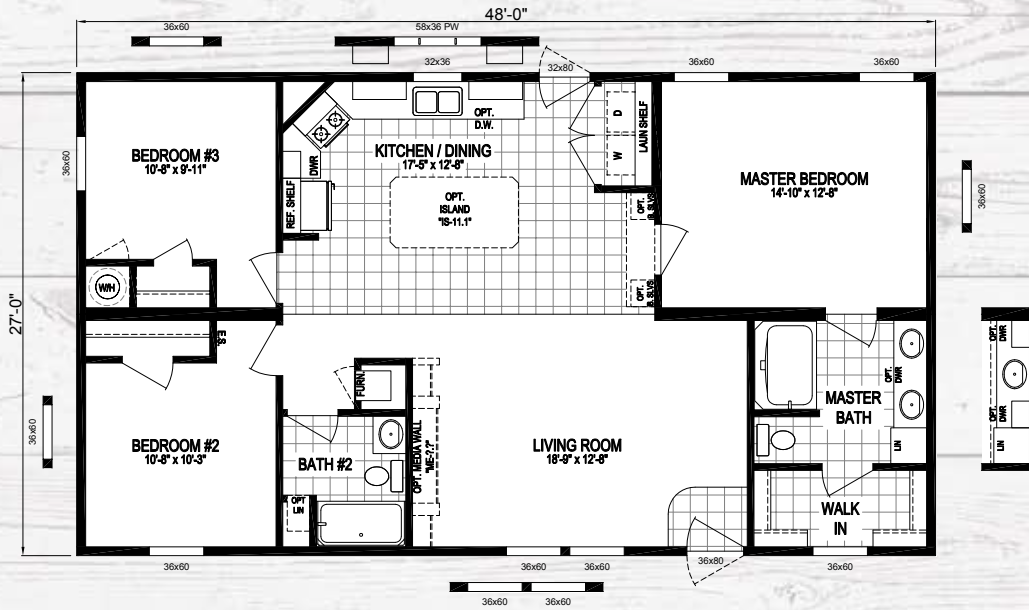


# The Madison

MODEL NUMBER

**4828-9045**

★ 1,296 sq. ft. 3 Bedroom / 2 Bath



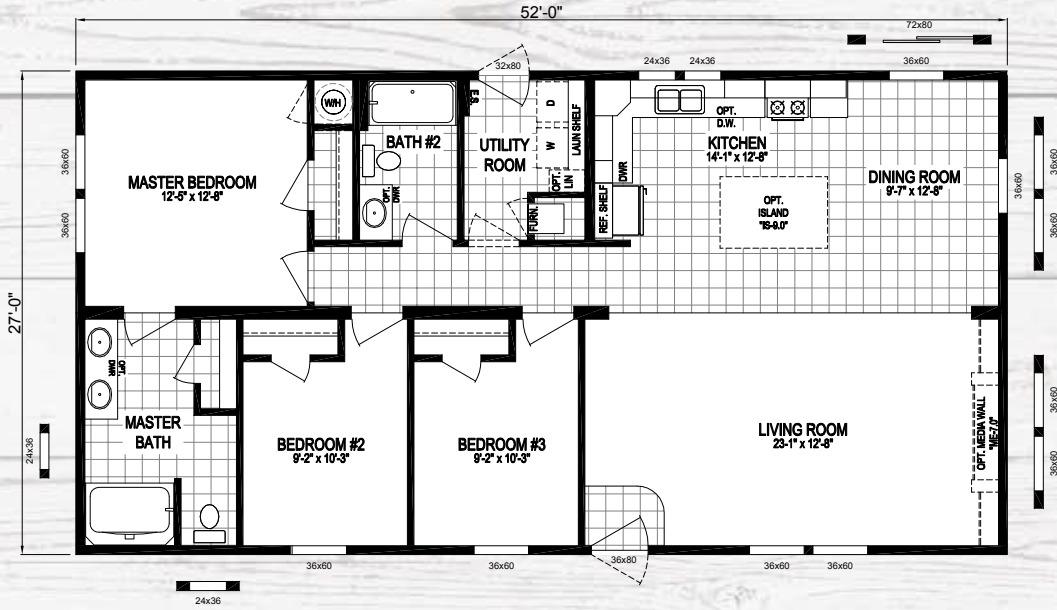
DELUXE BATH OPTION



# The Garfield

1,404 sq. ft. 3 Bedroom / 2 Bath ★ 5228-9016

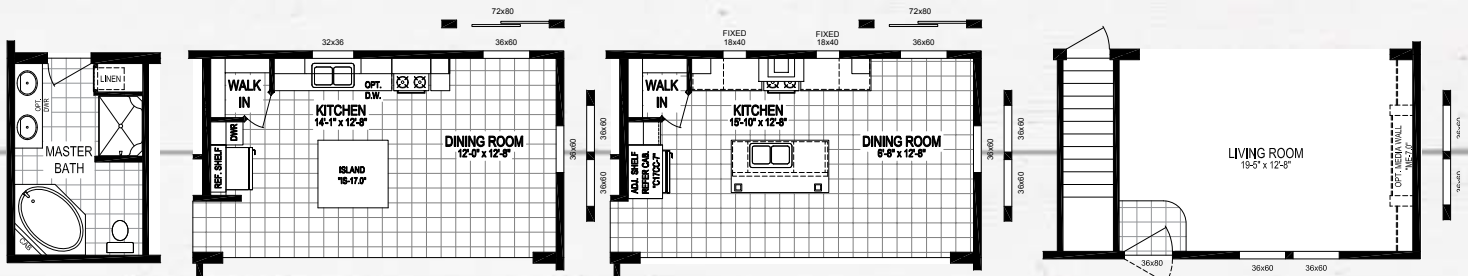
MODEL NUMBER



2 BEDROOM LAYOUT

OPTIONAL END ENTRY W/ FRONT PORCH

8' PORCH OPTION W/ END ENTRY



GRANITE COUNTERTOP KITCHEN #1

GRANITE COUNTERTOP KITCHEN #3

OPTIONAL BASEMENT STAIRWELL

OPTIONAL DELUXE BATH "A"



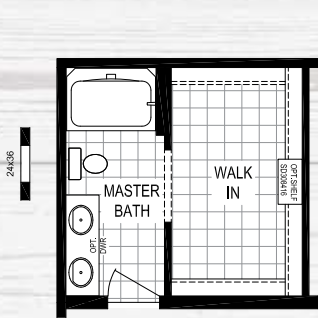
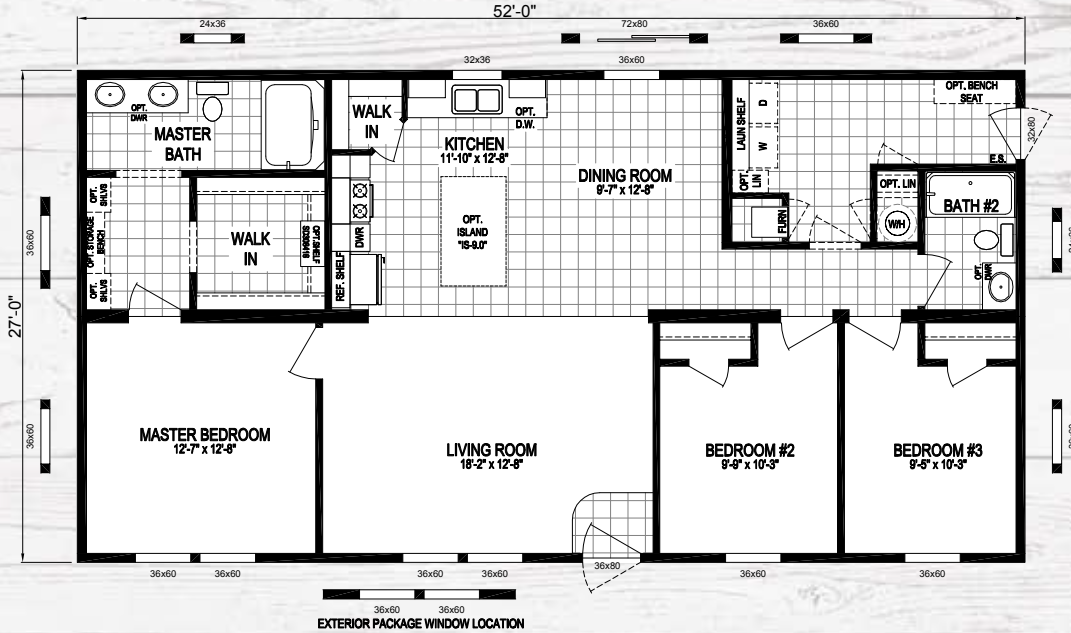


# The Eisenhower

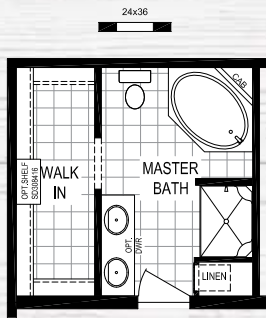
MODEL NUMBER

**5228-9001**

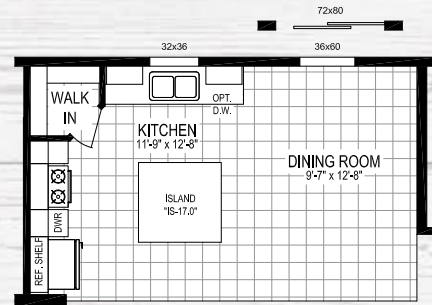
★ 1,404 sq. ft. 3 Bedroom / 2 Bath



TRADITIONAL BATH OPTION



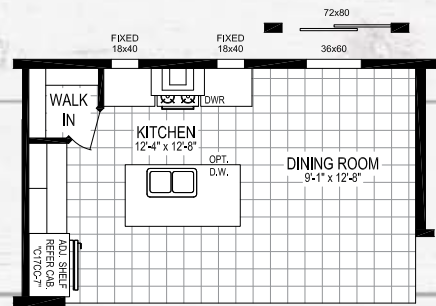
DELUXE BATH OPTION "A"



GRANITE COUNTERTOP KITCHEN #1



OPTIONAL BASEMENT STAIRWELL



GRANITE COUNTERTOP KITCHEN #2

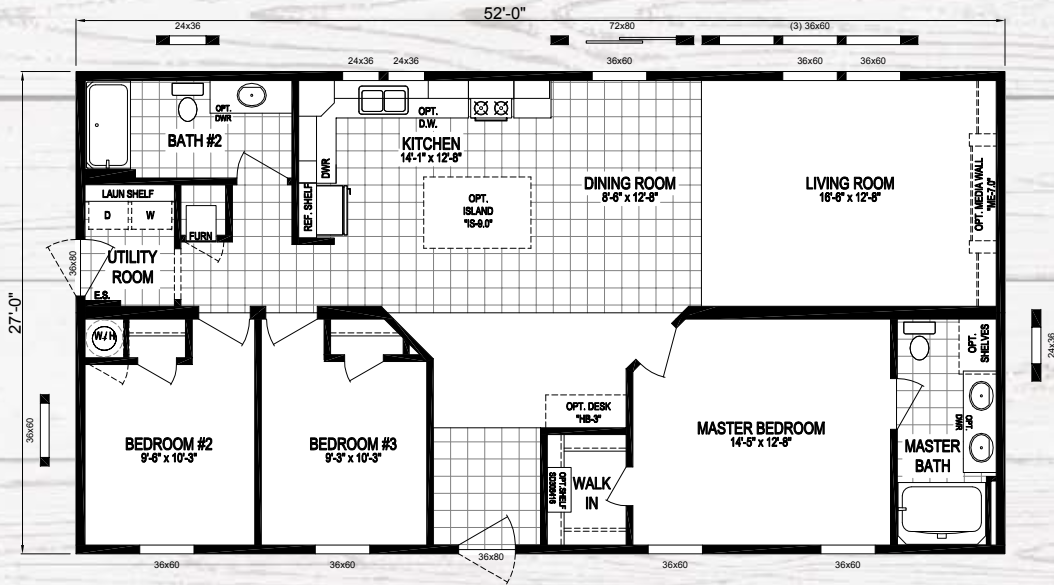




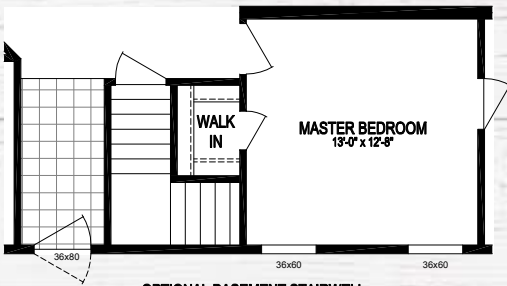
# The Jefferson

1,404 sq. ft. 3 Bedroom / 2 Bath ★ 5228-9007

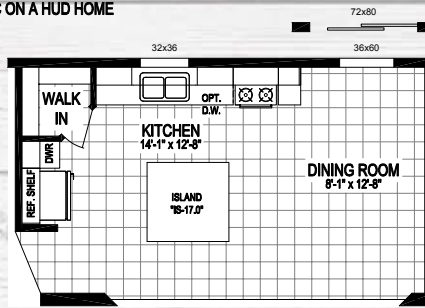
MODEL NUMBER



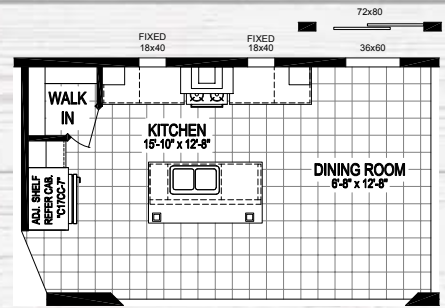
NOTE:  
A GAS WATER HEATER WILL REQUIRE AN AC ON A HUD HOME



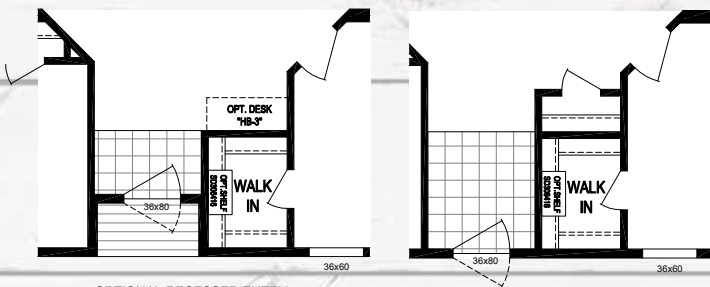
OPTIONAL BASEMENT STAIRWELL  
(NOT AVAILABLE WITH EXTERIOR PACKAGE)



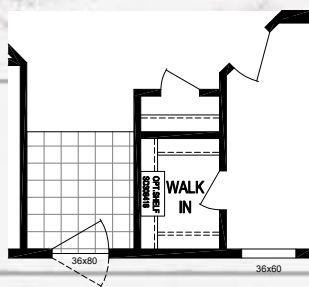
GRANITE COUNTERTOP KITCHEN #1



GRANITE COUNTERTOP KITCHEN #3



OPTIONAL RECESSED ENTRY  
(NOT AVAILABLE WITH BASEMENT STAIRWELL)



OPTIONAL ENTRY CLOSET



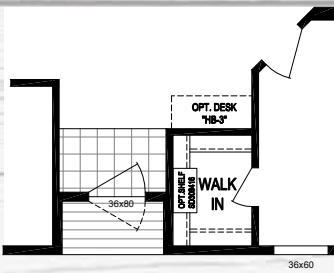
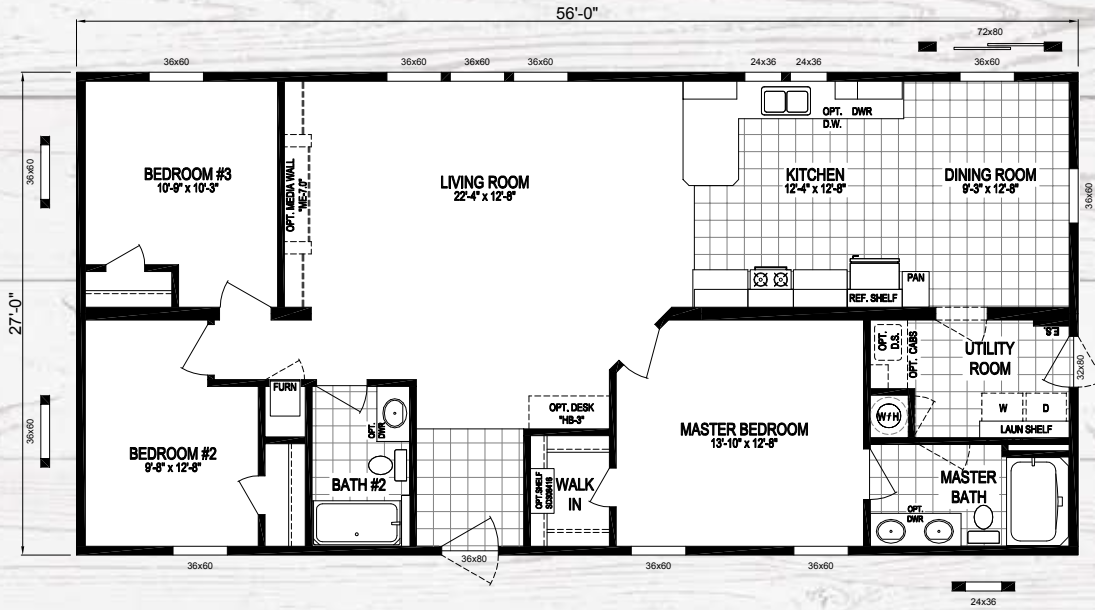


# The Truman

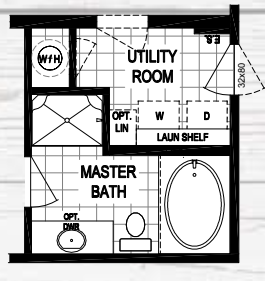
MODEL NUMBER

**5628-9009**

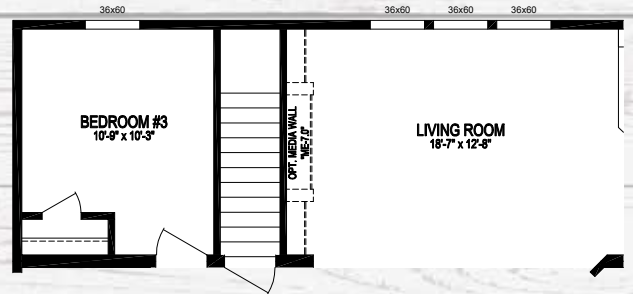
★ 1,512 sq. ft. 3 Bedroom / 2 Bath



OPTIONAL RECESSED ENTRY  
(NOT AVAILABLE WITH BASEMENT STAIRWELL)

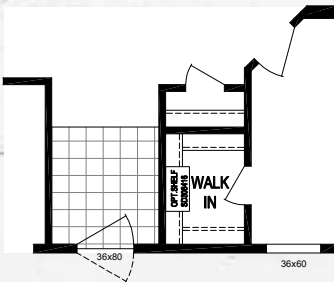


OPTIONAL DELUXE BATH



OPTIONAL BASEMENT STAIRWELL

NOTE:  
A GAS WATER HEATER WILL REQUIRE  
AN AC ON A HUD HOME



OPTIONAL ENTRY CLOSET

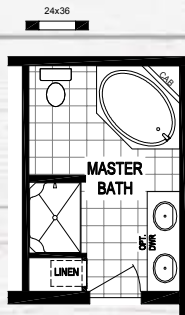
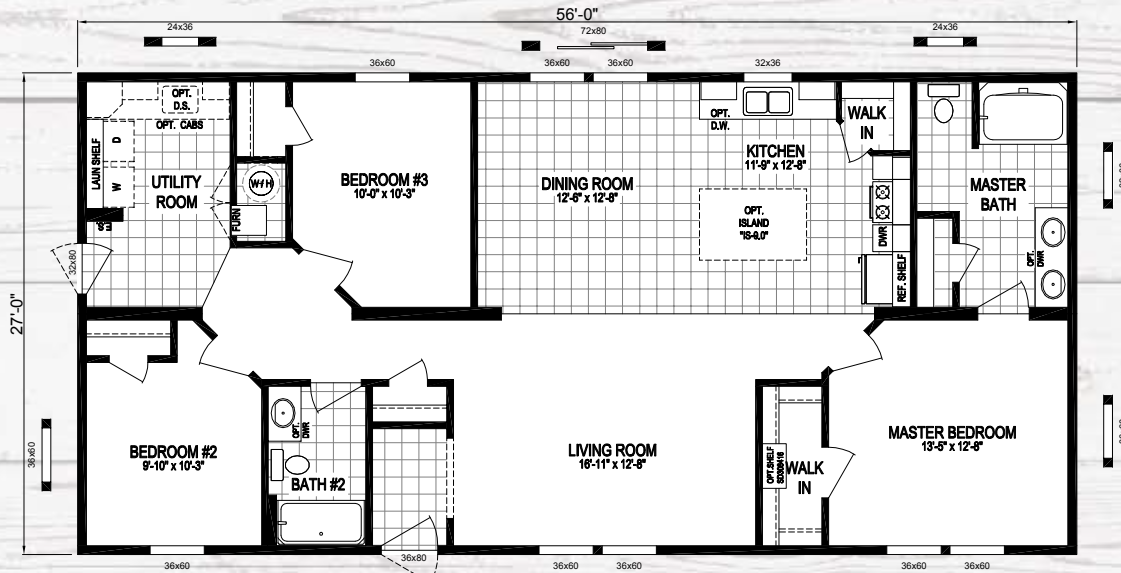




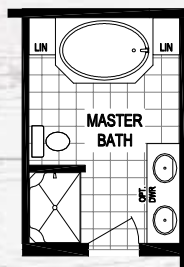
# The Buchanan

1,512 sq. ft. 3 Bedroom / 2 Bath ★ 5628-9037

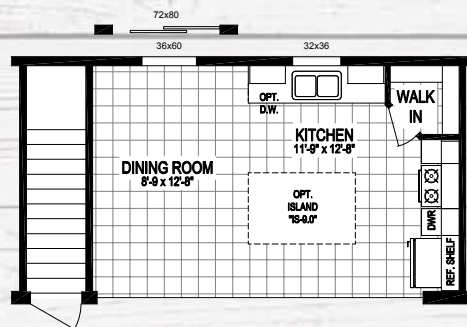
MODEL NUMBER



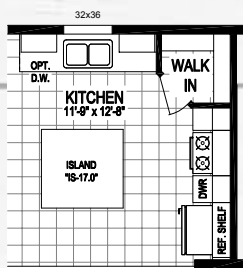
OPTIONAL DELUXE BATH (OPTION A)



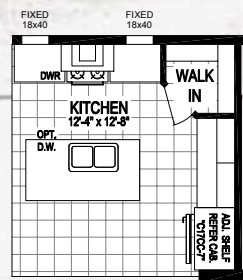
OPTIONAL DELUXE BATH (OPTION B)



OPTIONAL BASEMENT STAIRWELL



GRANITE COUNTERTOP KITCHEN #1



GRANITE COUNTERTOP KITCHEN #2



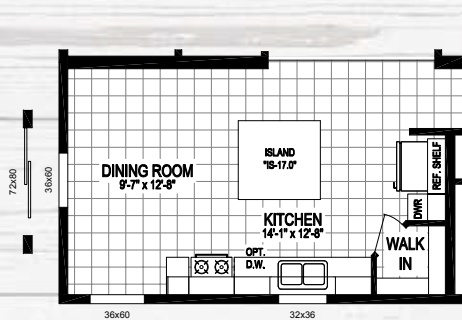
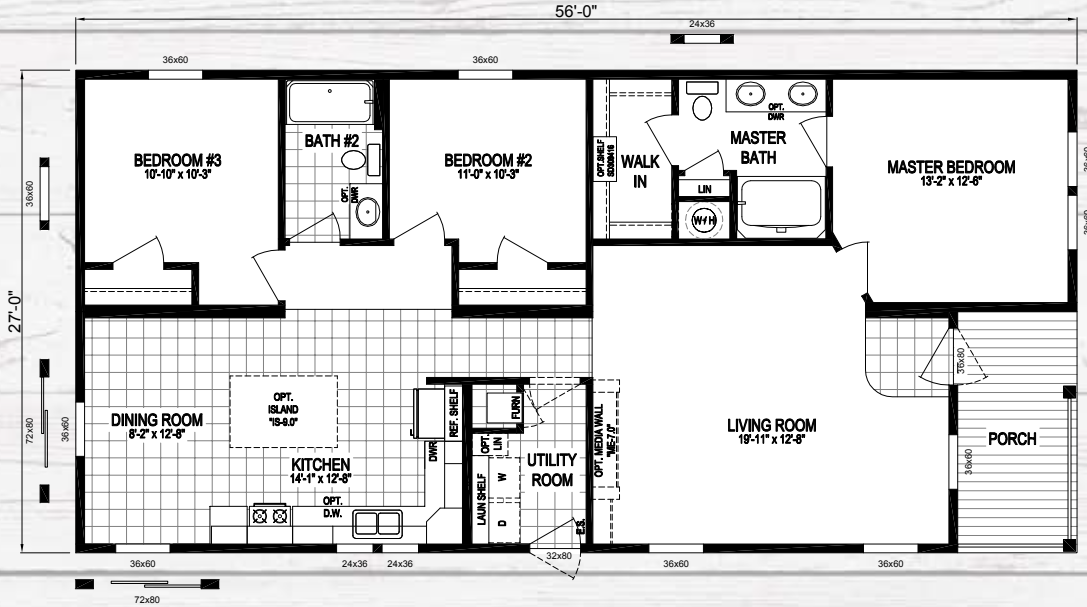


# The Coolidge

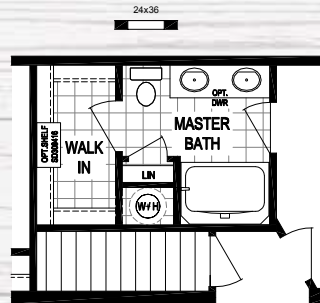
MODEL NUMBER

**5628-9033**

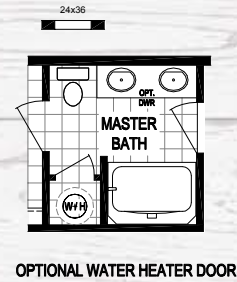
★ 1,422 sq. ft. 3 Bedroom / 2 Bath



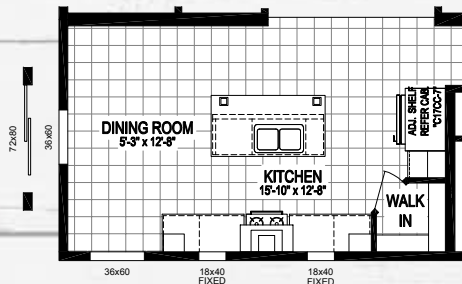
GRANITE COUNTERTOP KITCHEN #1



OPTIONAL BASEMENT STAIRWELL



OPTIONAL WATER HEATER DOOR



GRANITE COUNTERTOP KITCHEN #3

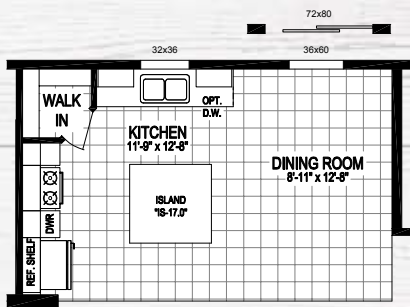
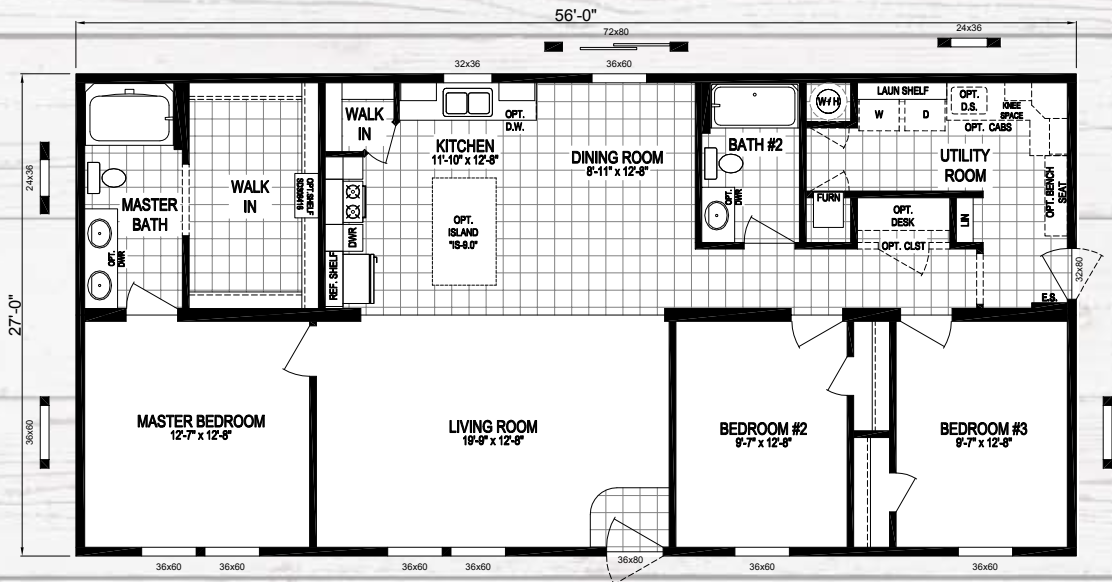




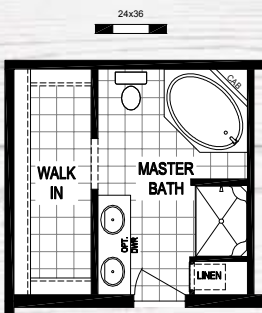
# The Jackson

1,512 sq. ft. 3 Bedroom / 2 Bath ★ 5628-9034

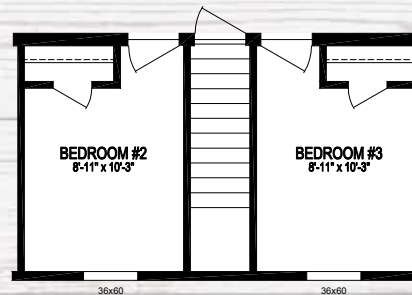
MODEL NUMBER



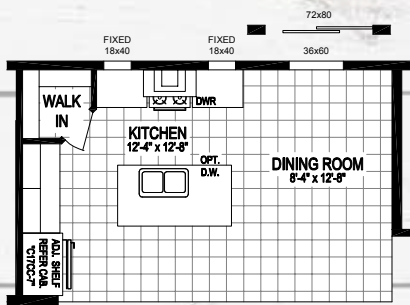
GRANITE COUNTERTOP KITCHEN #1



DELUXE BATH OPTION OPT. "A"



OPTIONAL BASEMENT STAIRWELL



GRANITE COUNTERTOP KITCHEN #2



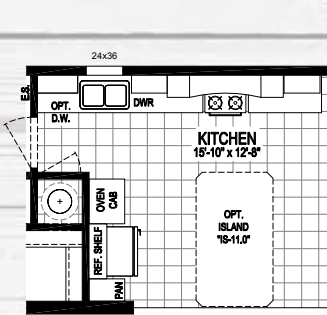
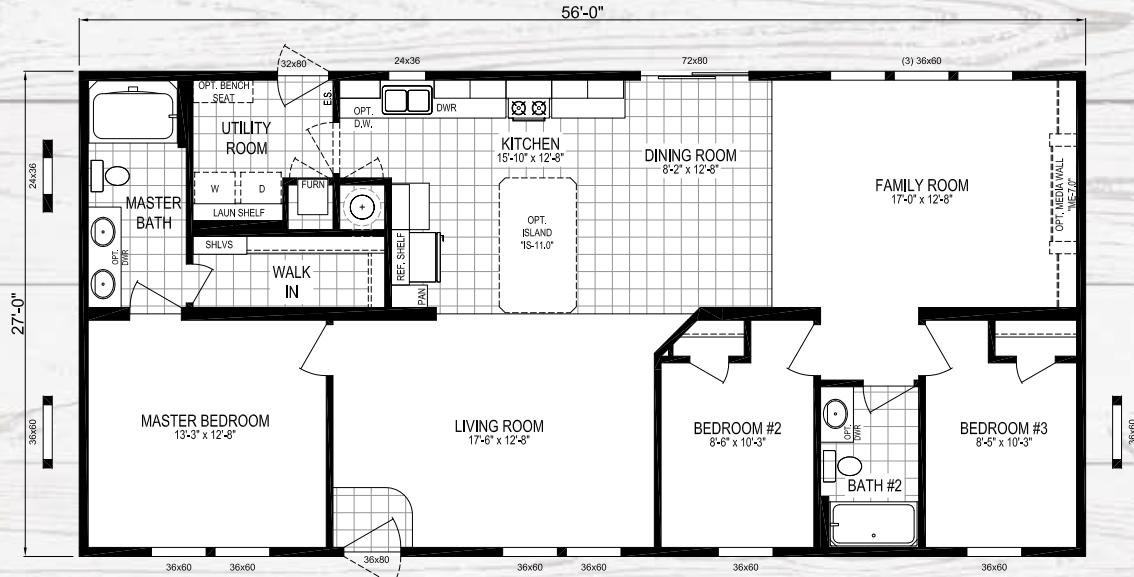


# The Wyatt

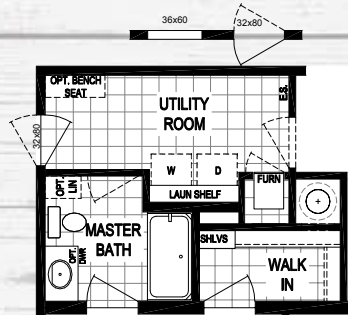
MODEL NUMBER

**5628-8045**

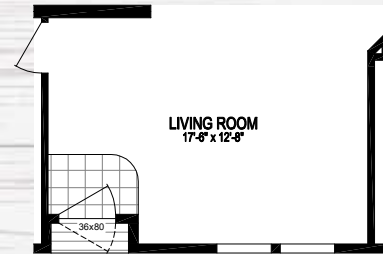
★ 1,512 sq. ft. 3 Bedroom / 2 Bath



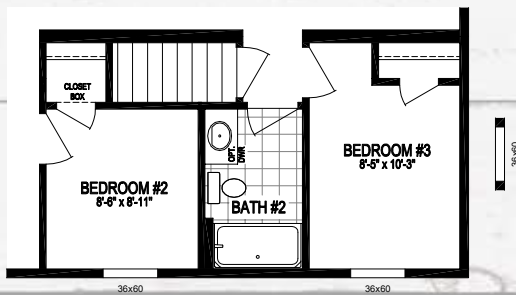
GOURMET KITCHEN WITH SURFACE COOKTOP, BUILT-IN OVEN & MICROWAVE



OPTIONAL END ENTRY



OPTIONAL RECESSED ENTRY



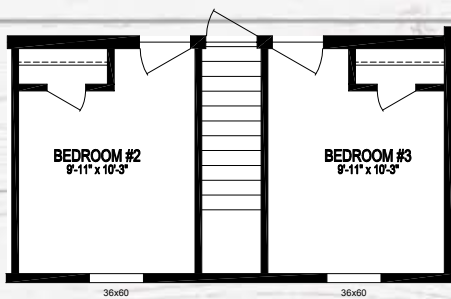
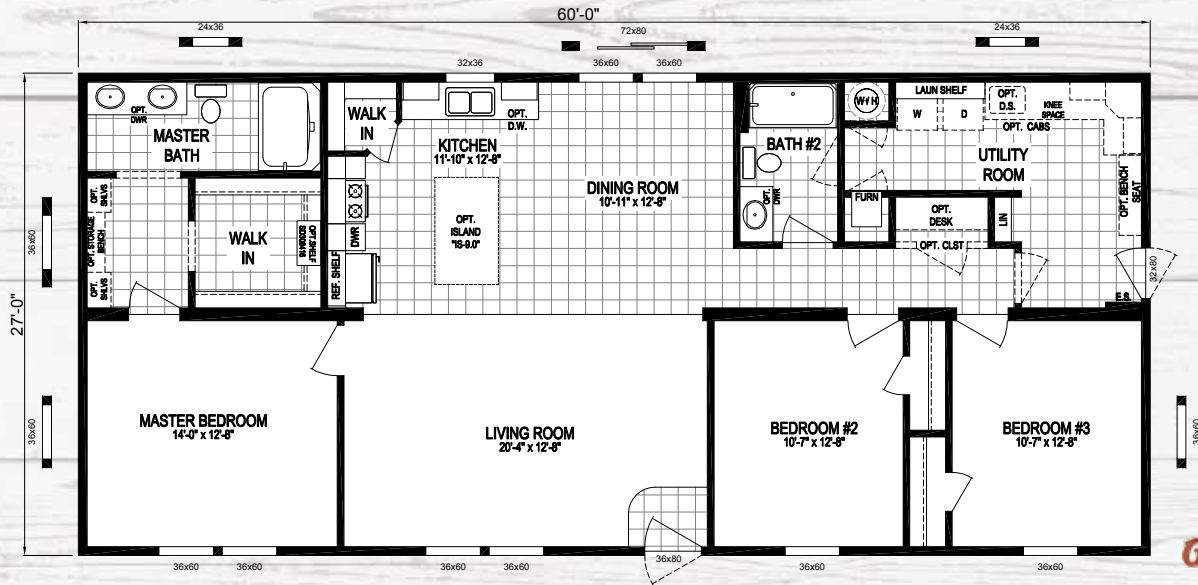
OPTIONAL BASEMENT STAIRWELL



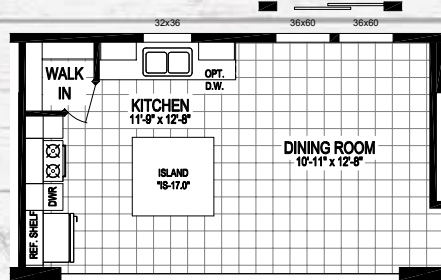


# The Roosevelt

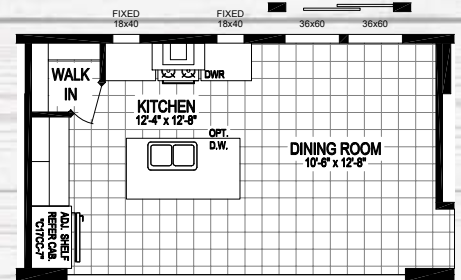
1,620 sq. ft. 3 Bedroom / 2 Bath ★ 6028-9002 MODEL NUMBER



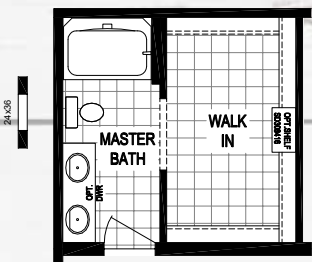
OPTIONAL BASEMENT STAIRWELL



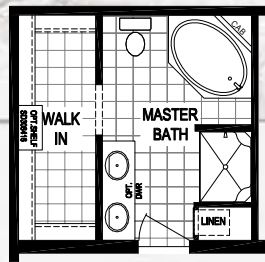
GRANITE COUNTERTOP KITCHEN #1



GRANITE COUNTERTOP KITCHEN #2



TRADITIONAL BATH OPTION



DELUXE BATH OPTION OPT. "A"



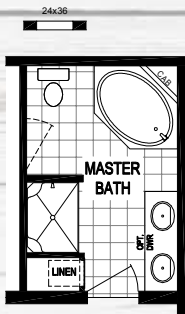
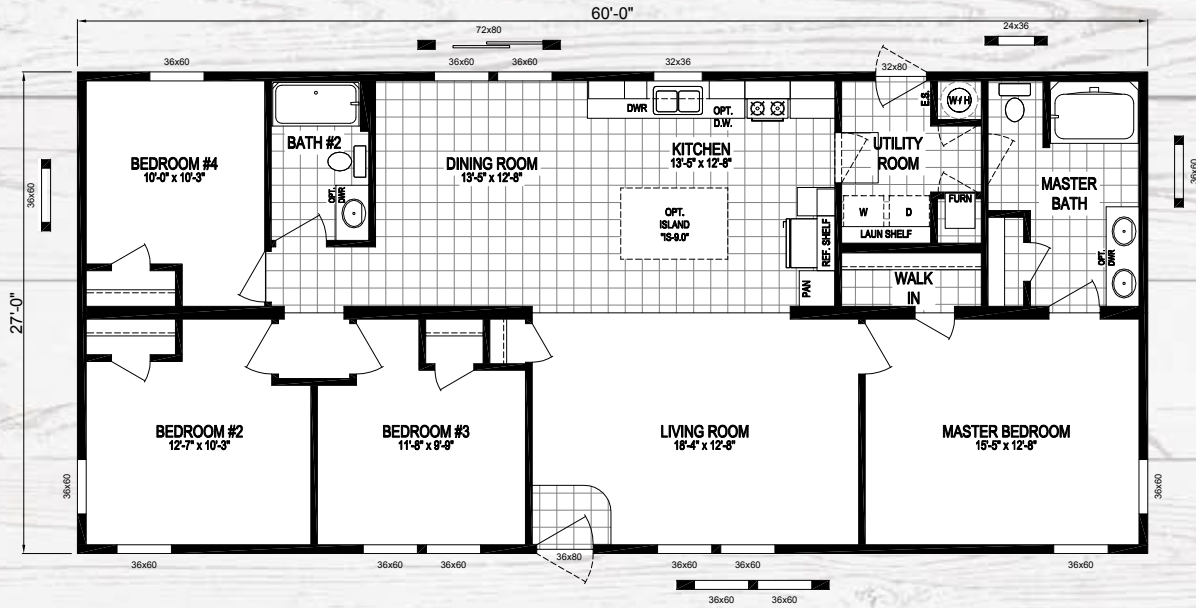


# The McKinley

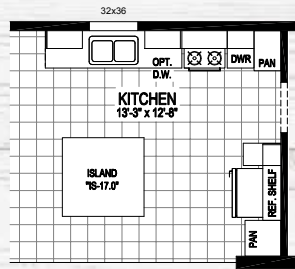
MODEL NUMBER

**6028-9019**

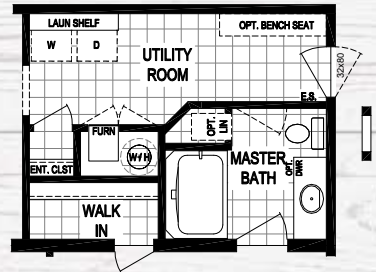
★ 1,620 sq. ft. 4 Bedroom / 2 Bath



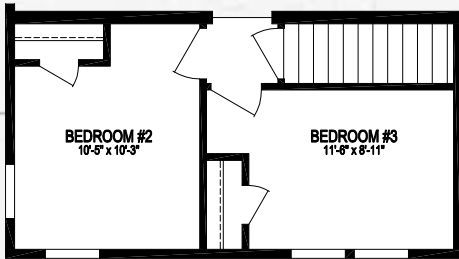
OPTIONAL DELUXE BATH  
(w/ CORNER DECK TUB)  
OPT. "A"



GRANITE COUNTERTOP KITCHEN



OPTIONAL END ENTRY



OPTIONAL BASEMENT STAIRWELL

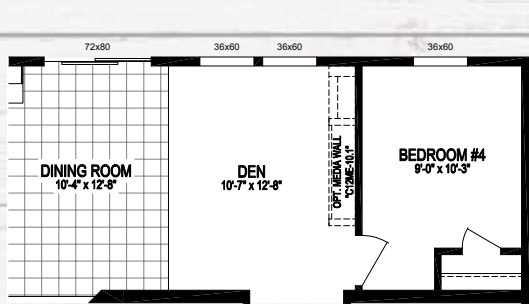
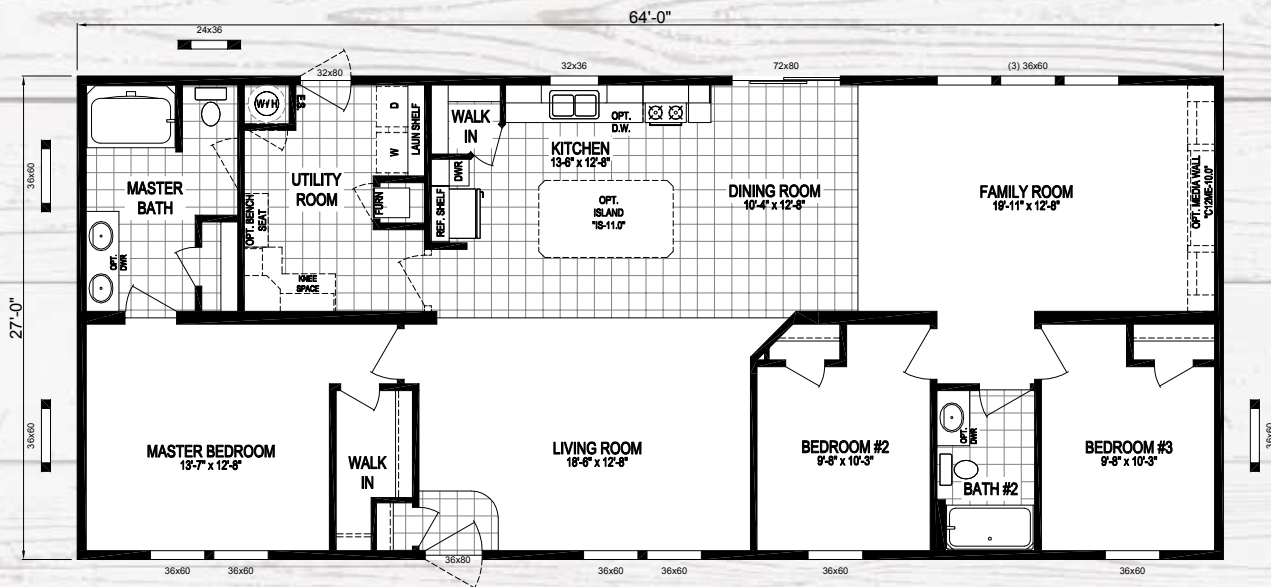




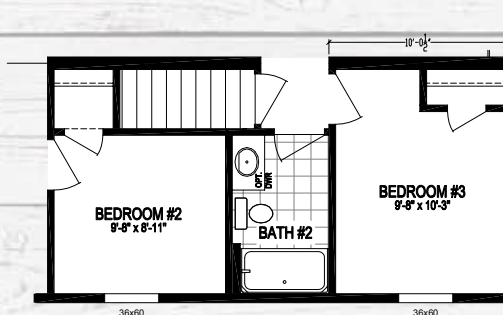
# The Lincoln

1,728 sq. ft. 3 Bedroom / 2 Bath ★ 6428-9006

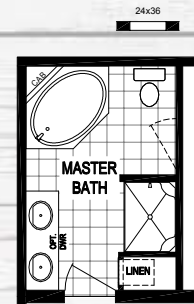
MODEL NUMBER



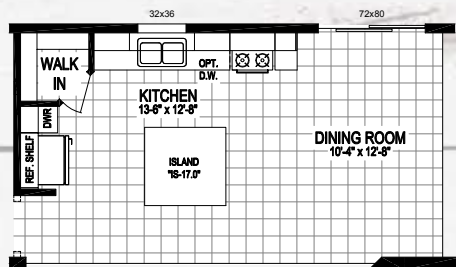
OPTIONAL 4TH BEDROOM



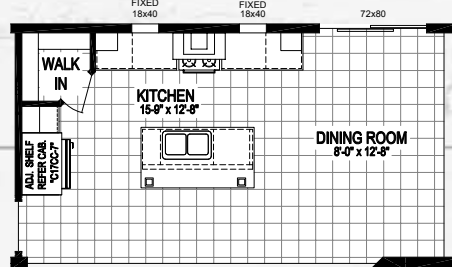
OPTIONAL BASEMENT STAIRWELL



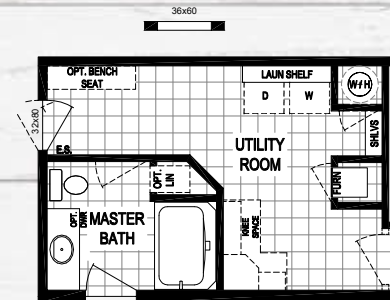
OPTIONAL DELUXE BATH (w/ CORNER DECK TUB) OPT. "A"



GRANITE COUNTERTOP KITCHEN #1



GRANITE COUNTERTOP KITCHEN #3



OPTIONAL END ENTRY



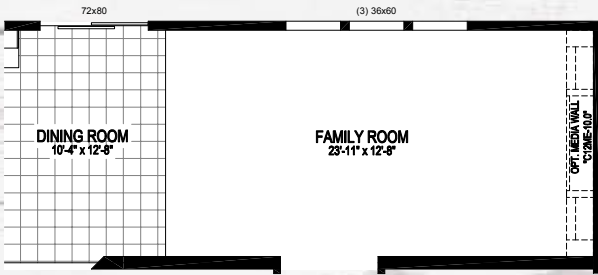
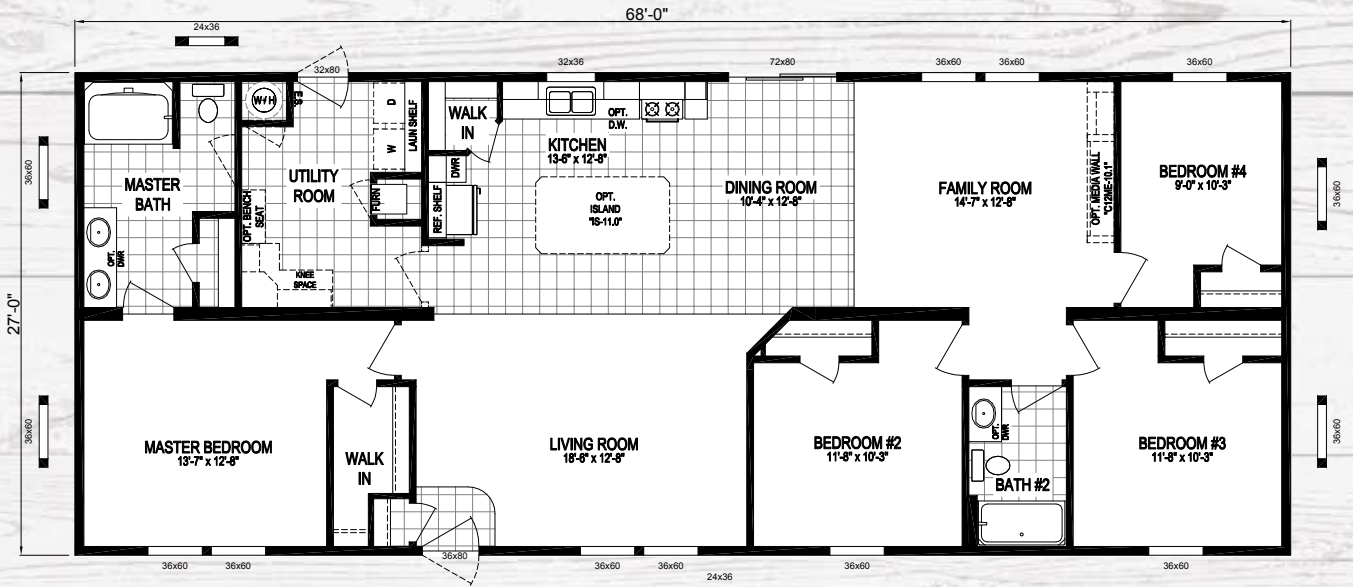


# The Ward

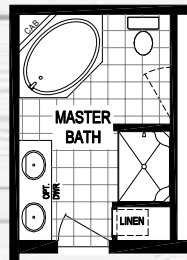
MODEL NUMBER

**6828-9006-1**

★ 1,836 sq. ft. 4 Bedroom / 2 Bath



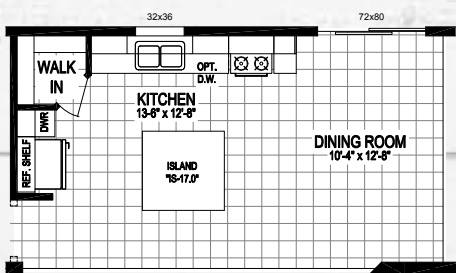
3 BEDROOM OPTION



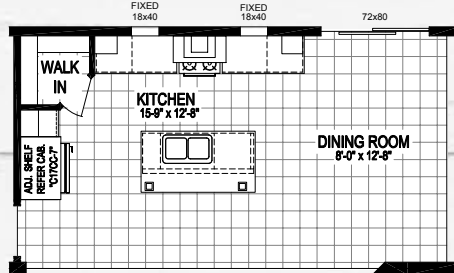
OPTIONAL DELUXE BATH  
(w/ CORNER DECK TUB)  
OPT. "A"



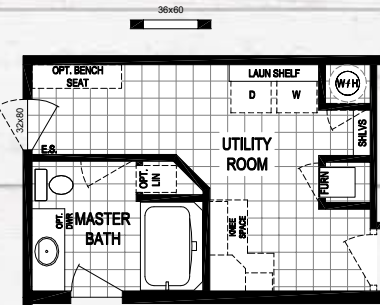
OPTIONAL BASEMENT STAIRWELL



GRANITE COUNTERTOP KITCHEN #1



GRANITE COUNTERTOP KITCHEN #3



OPTIONAL END ENTRY







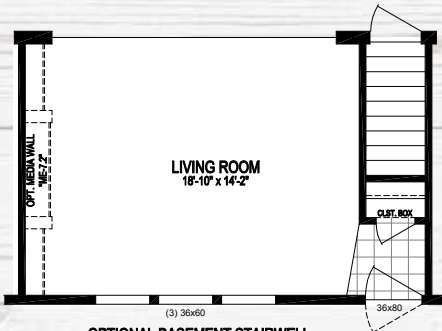
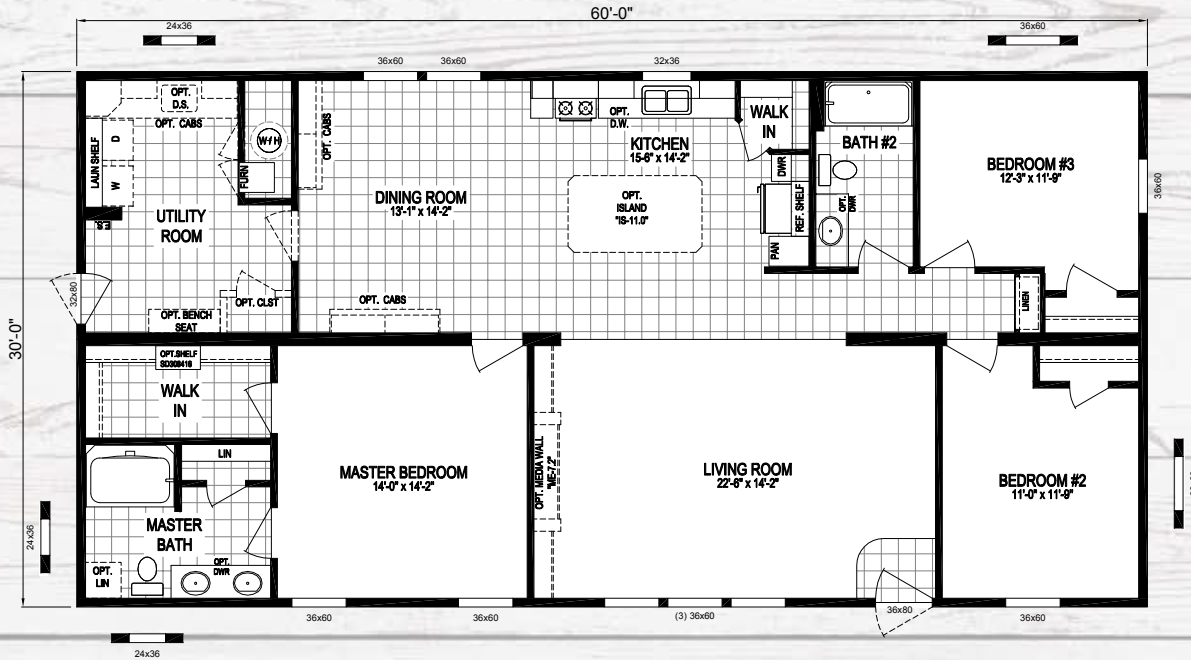


# The Cleveland

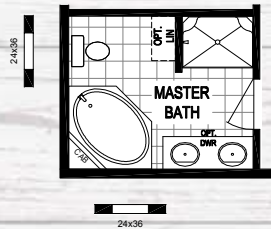
MODEL NUMBER

**6030-9024**

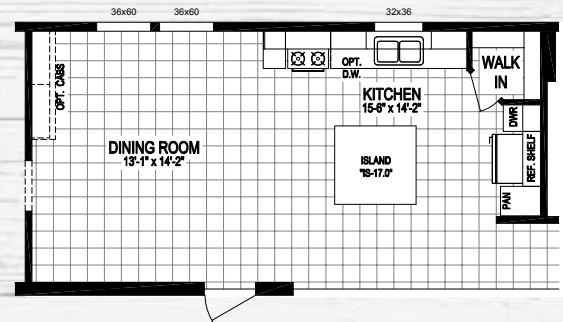
★ 1,800 sq. ft. 3 Bedroom / 2 Bath



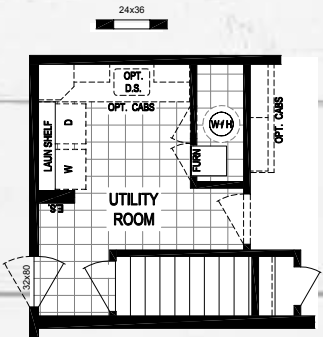
OPTIONAL BASEMENT STAIRWELL (OPTION #1)



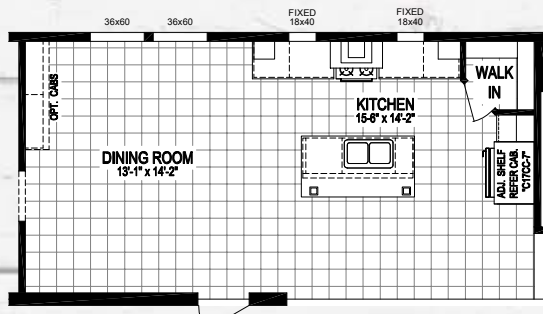
OPTIONAL DELUXE BATH



GRANITE COUNTERTOP KITCHEN #1



OPTIONAL BASEMENT STAIRWELL (OPTION #2)



GRANITE COUNTERTOP KITCHEN #3

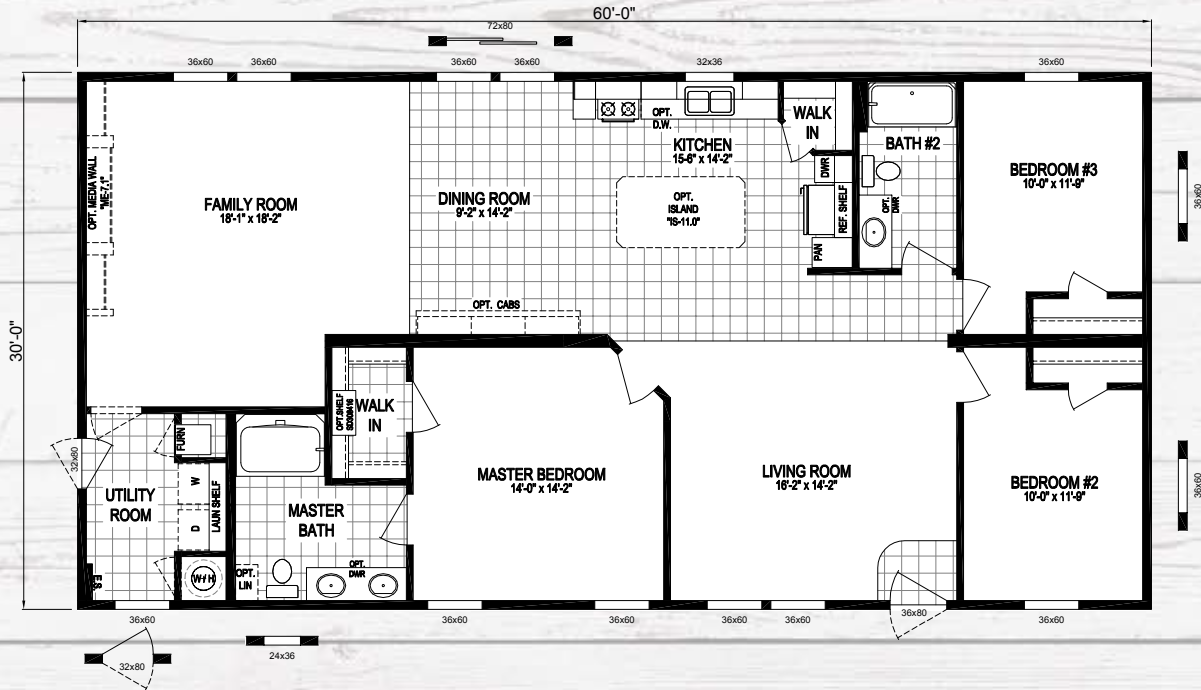




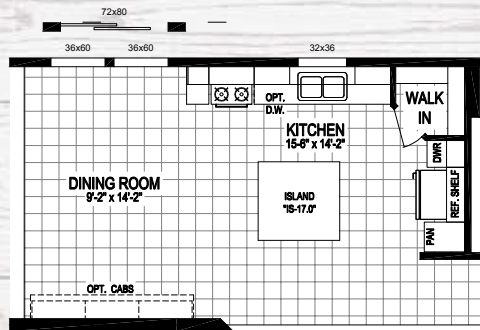
# The Grant

1,800 sq. ft. 3 Bedroom / 2 Bath ★ 6030-9025

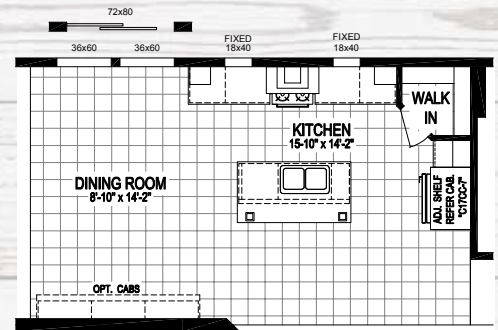
MODEL NUMBER



OPTIONAL BASEMENT STAIRWELL



GRANITE COUNTERTOP KITCHEN #1



GRANITE COUNTERTOP KITCHEN #3

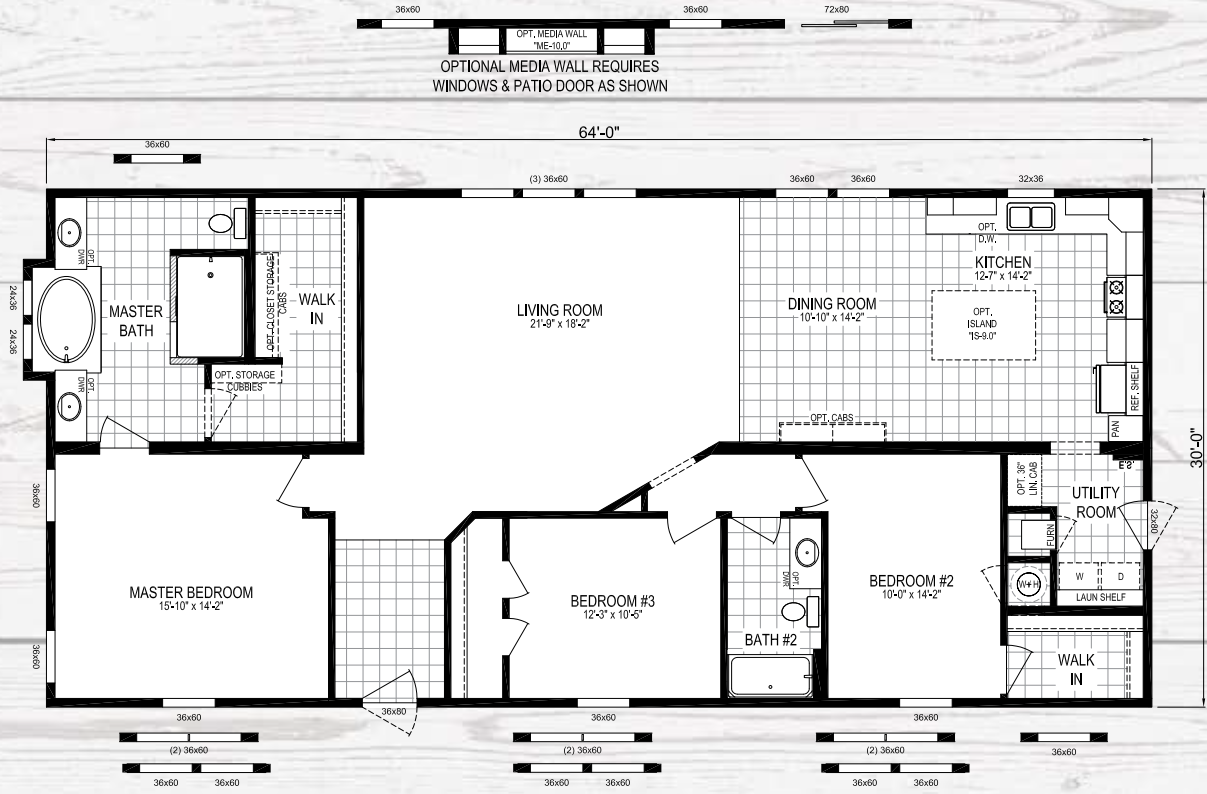


# The Harrison

MODEL NUMBER

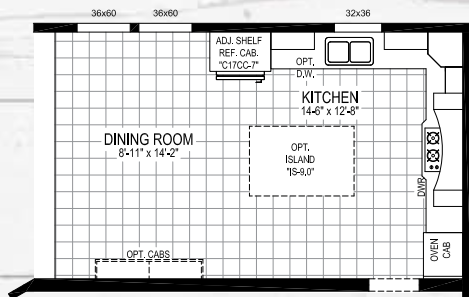
**6430-9046**

★ 1,920 sq. ft. 3 Bedroom / 2 Bath

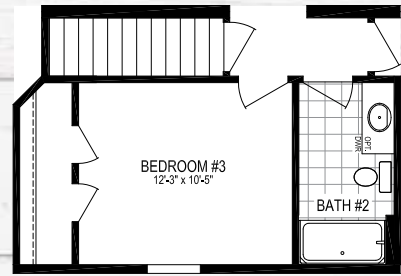


OPTIONAL MEDIA WALL REQUIRES WINDOWS & PATIO DOOR AS SHOWN

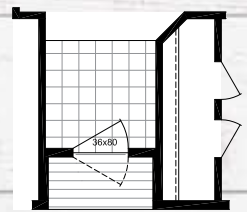
OPTIONAL WINDOWS ON FRONT OF HOUSE REQ'D FOR OPTIONAL FRONT ELEVATION PACKAGE



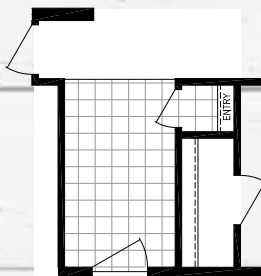
GOURMET KITCHEN WITH SURFACE COOK TOP, BUILT IN OVEN & MICROWAVE



OPTIONAL BASEMENT STAIRWELL



OPTIONAL RECESSED ENTRY



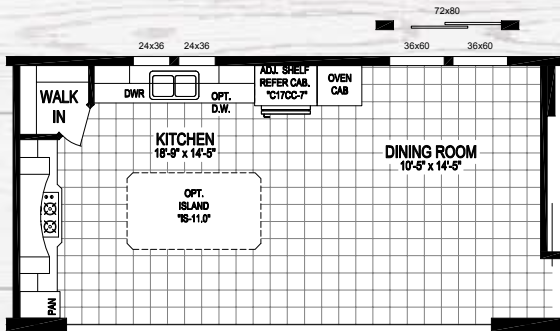
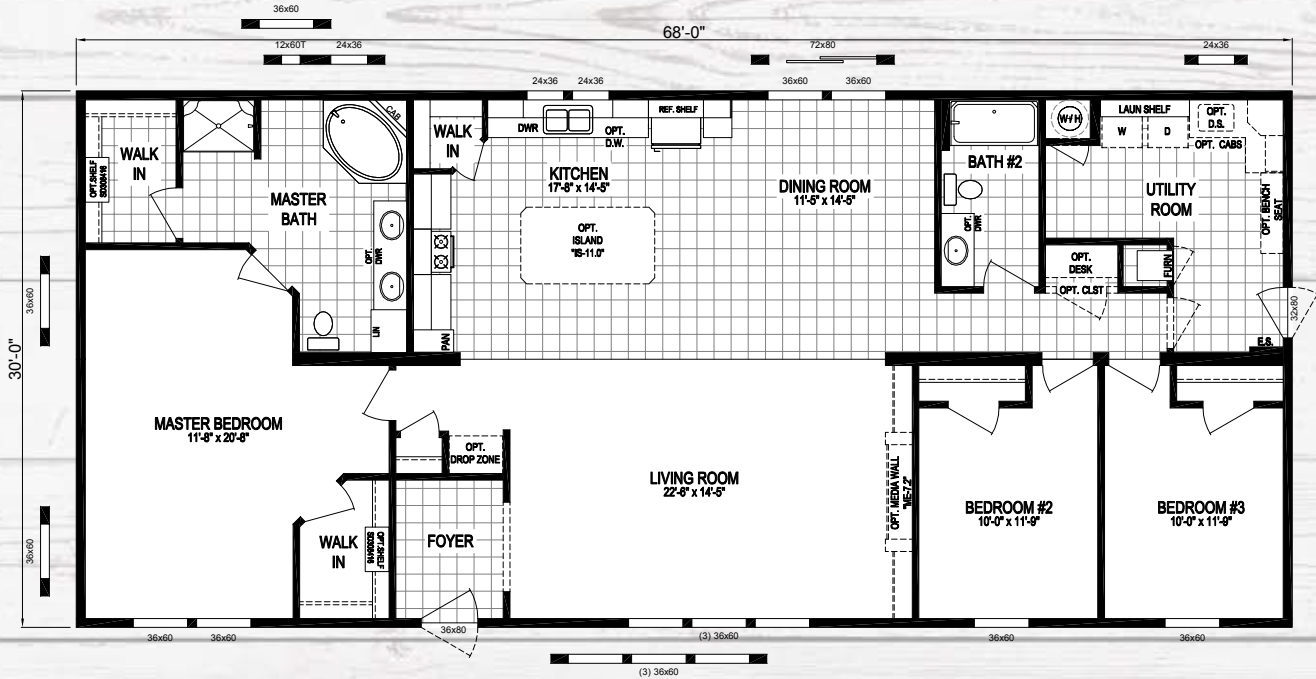
OPTIONAL ENTRY CLOSET



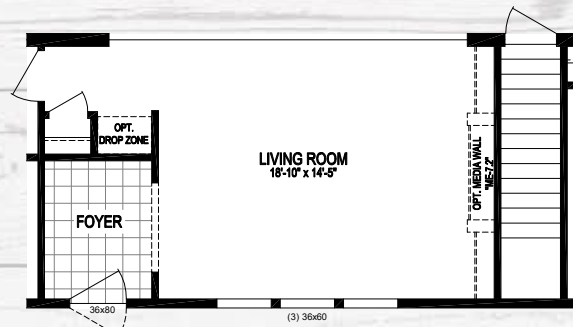
# The Laramie

2,040 sq. ft. 3 Bedroom / 2 Bath ★ 6830-8052

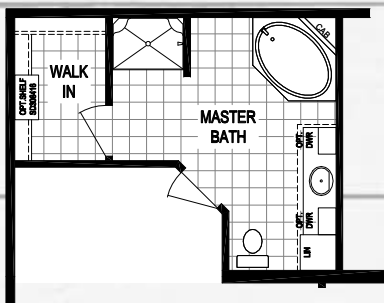
MODEL NUMBER



GOURMET KITCHEN WITH SURFACE COOK TOP, BUILT IN OVEN & MICROWAVE



OPTIONAL BASEMENT STAIRWELL



OPTIONAL MASTERBATH VANITY







# Dormer Options



**10' Open Dormer**  
3/12 Pitch Only



**20' Hinged Dormer w/6' Eyebrow**  
5/12 Pitch Only



**20' Hinged Dormer w/Continuous Eave**  
5/12 Pitch Only



**20' Open Dormer**  
3/12 Pitch Only



**20' Open Dormer w/Eyebrow**  
3/12 Pitch Only



**20' Open Hinged Dormer**  
5/12 Pitch Only









# Notes

A series of horizontal lines on a white, wood-grain textured background, intended for writing notes.





# SCHULT

MIDDLEBURY

**Clayton**  
middlebury

437 N. Main Street  
Middlebury, IN 46540  
Phone: 574.825.7500  
Fax: 574.825.7569  
[www.schultmiddlebury.com](http://www.schultmiddlebury.com)



**YOUR LOCAL HOME BUILDER**

Because our company has a continuous product update process, specifications, floor plan lay-out and dimensions shown on this literature are subject to change without notice or obligations. Construction and design specifications as well as features presented conceptual, therefore should not be used as actual construction data and may not be offered in all series or models. Our Retailer will provide accurate, up-to-date information on available options and specifications for your home.

12/15